



# GENERAL INSULATION SERVICES

*Generating Innovative Solutions since 1977.*

23 Furnace Street Ext.  
McKees Rocks, PA 15136  
(412) 771-8860  
fax (412) 771-8918  
(800) 447-4678  
[www.gisinsulation.com](http://www.gisinsulation.com)

## **REFRIGERATION INSULATION SYSTEMS**

*TUBING • HANGERS • TANKS • VESSELS • AIR DUCTS  
FITTINGS • SHEETS • ROLLS*

*APPLICATIONS FROM -70°F  
UV RATED • UL CLASSIFIED • USDA APPROVED  
TOTAL SYSTEM DESIGNED*

**DESIGNED ESPECIALLY FOR THE HVAC & R INDUSTRY**



# Aeroflex EPDM

Aerocel EPDM Tube and Sheet Insulation is a flexible, closed-cell and light weight EPDM\* based elastomeric material designed for insulating liquid cooling and heating lines. 3/8", 1/2", 3/4", 1" 1-1/4", 1-1/2" and 2" wall in popular I.D. sizes up to 6" IPS. The closed-cell structure of Aerocel Pipe Insulation makes it an efficient insulation

## Key Features

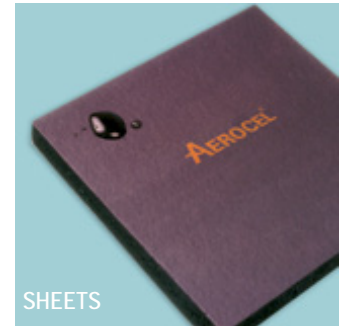
- UV Resistant
- Low thermal conductivity
- Easy to install
- 25/50 rated through 2" wall
- EPDM Rubber
- Moisture Resistant



ROLLS



STANDARD TUBE AND SLIT WITH SSPT AVAILABLE



SHEETS

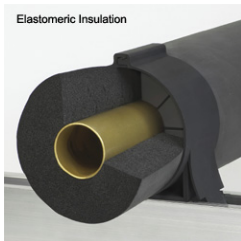
# Insulated Hangers

## THE AEROFIX-U

- Hermetically seals against the environment (moisture penetration) to prevent call-backs and conserve energy
- The only UV and moisture-resistant elastomer tube insulation available
- Crush-resistant pipe-hanger insert that safeguards the integrity of the insulation from crushing



## Klo-Shure 8 Series and 7 Series Strut Mounted and Clevis Hangers

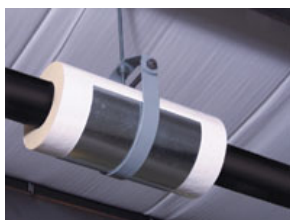


Elastomeric Insulation

- Installs in seconds!
- One piece design
- Supports tubing and secures insulation
- Eliminates insulation compression
- Superior vapor barrier
- Improved finish - no tape, no glue
- Meets the 25/50 flame spread/smoke developed index



## Tru-Balance 3300E Insulated Saddles



- A complete composite assembly, for Fast and Easy Installation.
- A 360-degree section of 3 p.c.f. density polyisocyanurate pipe insulation for greater Thermal Efficiency.
- A 6 mil thickness, .01 perm rated industrial grade vapor retarder film for Superior Condensation Control.
- A G-90 galvanized steel Buckaroo 180-degree bottom shield at hanger locations.
- A lock-joint to Reduce Heat Gain/Loss along the longitudinal seams to Save Energy.\*

# Jacket Systems



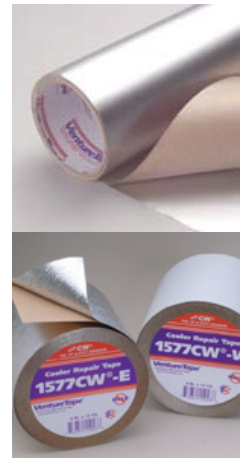
## PROTO PVC JACKETING

- 25/50 Rated..
- Excellent Appearance.
- Easy To Clean.
- Low Cost Installation
- Fast and Easy Insulation
- Long Lasting.
- Excellent Thermal Value
- Resistance To Fungi and Bacteria
- U.V. Resistant



## VENTURE CLAD JACKETING SYSTEM

- Performs well over a wide temperature range; -30°F to +300°F
- Applies easily at temperatures as cold as -10°F (-23°C)
- Zero permeability, absolute vapor barrier
- High puncture and tear resistance
- Contains tested and approved mold inhibiting agents
- Self adhesive material installs easily with no off-site fabrication required
- Exceeds standard building design requirements (UL 723 10/20 Flame Spread/Smoke Rating)
- Meets requirements of FSIS Directive 5000.1, 9 CFR, Part 416 for USDA and FDA facilities and Department of Health and Human Services Construction Guide for Food Facilities



## REDI-KLAD

- Factory applied Venture Clad on fiberglass pipe
- A low thermal conductivity of .23 at 75°F (24°C).
- Low-Cost Installation
- Available with a self-closure tape
- Lightweight and easy to handle.
- Low maintenance costs.
- No off-site fabrication required.
- Safe installation.
- Fast, easy installation
- Zero Permeability
- Redi-Klad jacket provides a zero perm vapor barrier.
- Easy Size Identification



## WRAPAROOS

- Two-piece cover designed to cover clevis-type pipe insulation hangers.
- High temperature rated (205 F) PVC,
- Intended for use in food plants, clean rooms, restaurants
- Helps to keep the total pipe insulation system clean.
- Protect surfaces from insects, dust and dirt.
- Easy onsite installation
- Keeps out moisture and bacteria

# Other Pipe Insulation

- Fiber Glass
- Elastomeric
- Urethane
- Cellular Glass
- Mineral Wool



# Accessories

## PROTAPE

- Self-adhering
- EPDM rubber tape
- For insulation joints
- Protects against humidity.



## AEROTAPE

- Flexible
- Self adhering
- High quality EPDM Material
- Versatile



## EVERSEAL

- Designed for all types of climates.
- Insulates cold pipes for all kinds of air conditioners
- Helps stop condensation problems.
- Retards heat gain in cold pipes.
- Prevents heat loss in hot pipes.



## AEROCOAT

- Pure acrylic emulsion water based latex paint
- Use with Aerocel insulation (sheets and tubes)
- Protect against ultraviolet rays
- Protects against adverse weather conditions.



## AEROSEAL

- Creates strong seams and butt joints
- Operates at temperatures up to 257 degrees F.
- High water vapor resistance
- Weathering resistance
- Prevents moisture from penetrating joints
- Forms a permanent bond



## BRISTOL BRUSHES

- Ideal for adhesives on rubber and polyethylene insulations
- Economically priced with excellent quality.
- Features plain wooden handles.



## GREEN HANDLED SHOE KNIFE

- Great for cutting rubber and polyethylene
- Round burnt finish riveted handle
- Quality grade steel blade 4"



## PIPE CALLIPERS

- For measuring iron pipe and copper tubing
- For pipe sizes from 1/4" to 12"
- Sturdy construction-nickel plated steel, corrosion resistant

# Fire Stopping Solutions



- Metacaulk® firestopping products provide true flexibility with fire protection.
- Fill voids in construction joints and around penetrations in fire rated walls or floors.
- Helps restore penetrated fire rated wall or floor to its original fire rating.
- Intumescent properties which cause them to expand when heated, forming a high strength insulating char.
- Metacaulk sealants will restrict the spread of flames, smoke, hot gases and water through penetration openings and construction joints.



**1-800-447-4678**